

DL-8560A

6" Architectural Frame Internally Adjustable Wall Wash & Directional
PAR30, R30 Lamp

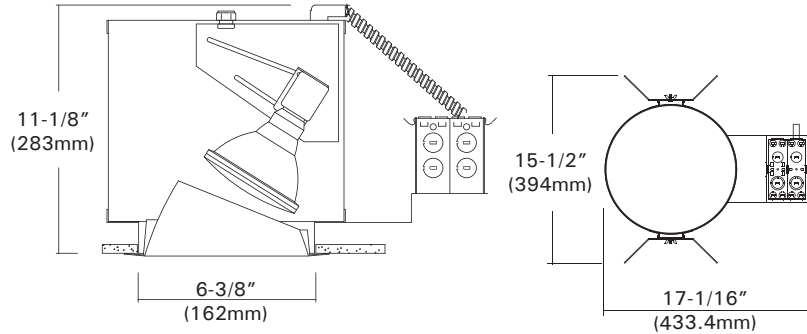
| | | |
|-------------|--|------|
| Catalog # | | Type |
| Project | | Date |
| Prepared by | | |

INCANDESCENT



DESCRIPTION

The 6" with wall wash reflector with convex lens for smooth illumination on vertical surface, or with open wall wash slope reflector for PAR lamp directional 0~42° tilt and 358° rotation with positive locking.



DESIGN FEATURES

Ceiling Cut-out : 6-1/2"

Lamp, Max, Watt. : 150W / PAR30, R30

◦ Housing

- C-UL listed, NON-IC, thermally protected housing for vertical PAR30, R30 incandescent lamps.
- Black painted heavy metal housing and compact frames designed to fit in commercial / architectural construction.
- 1-5/8" deep collar may use for various thickness of ceiling materials.

◦ Junction Box

- Listed for through branch circuit wiring. (Max. 8 No 12 AWG 90°C branch circuit conductors. (4 in, 4 out))
- (5) 1/2" knockouts with true pry-out slots and (4) knockouts with Romex cable clamp.
- Ground wire provided on J-box.

◦ Mounting Channel Bracket

- Commercial mounting kit provided up to 5" vertical adjustment, which accommodates 1/2" EMT conduit, optional HB-24 or HBC-24 bar hanger or lathing channels for T-bar grid or concealed spline ceiling.

◦ Trims

- Lens wall wash and open wall wash reflectors, also available slope baffle trims.

◦ Thermal Protector

- Self resetting thermal detector on J-box deactivates fixture if overheating occurs due to improper lamping or misapplied insulation.

◦ Direction adjustment

- Adjustable lamp direction in 358° rotation and 0~42° tilt with positive locking mechanism in adjustable bracket.

* Listing

- UL, c-UL listed for damp location.
- UL, c-UL listed for feed through.

Trims

6" Internally Adjustable Wall Wash Trims For

DL-8560A, DL-8561A, DL-8560H, DL-8561H, DL-8560TH

| | | |
|-------------|--|------|
| Catalog # | | Type |
| Project | | Date |
| Prepared by | | |

INCANDESCENT & METAL HALIDE

TM-625B

Slope Baffle
PAR30, T4.5 or T6
White Metal Trim Ring
O.D : 7-1/4"

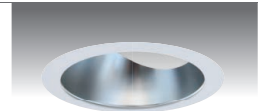


TM-625B-WH

TM-625B-BK

TM-625R

Slope Clear Reflector
PAR30, T4.5 or T6
White Metal Trim Ring
O.D : 7-1/4"



TM-625R-HC

TM-625BG

Slope Baffle w/ Convex Prismatic Lens
PAR30, T4.5 or T6
White Metal Trim Ring
O.D : 7-1/4"

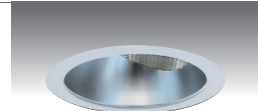


TM-625BG-WH

TM-625BG-BK

TM-625RG

Slope Reflector w/ Convex Prismatic Lens
PAR30, T4.5 or T6
White Metal Trim Ring
O.D : 7-1/4"



TM-625RG-HC

TM-655B

Straight Baffle
PAR30, T4.5 or T6
White Metal Trim Ring
O.D : 7-1/4"

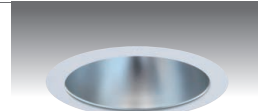


TM-655B-WH

TM-655B-BK

TM-655R

Straight Reflector
PAR30, T4.5 or T6
White Metal Trim Ring
O.D : 7-1/4"



TM-655R-HC

ORDERING INFORMATION

Choose the catalog / finish codes that best suit your needs and enter it on the appropriate line.

| TRIM MODEL | REFLECTOR | LENS | BAFFLE | METAL RING |
|------------|--------------------|----------------------|--------------------|--------------------|
| | CL :Clear | FR :Fresnel | WH :White | WH :White |
| | WH :White | AS :All Sanded | BK :Black | BK :Black |
| | GD :Gold | CL :Clear | SN :Satin Nickel | SN :Satin Nickel |
| | MA :Matte Platinum | CV :Convex Prismatic | AN :Antique Nickel | AN :Antique Nickel |
| | CP :Champagne | AL :Albalite | AC :Antique Copper | AC :Antique Copper |
| | PR :Pewter | SPL :Comfort Linear | MO :Mocha | MO :Mocha |
| | HC :Haze Clear | | CA :Cappuccino | CA :Cappuccino |
| | | | CH :Chrome | CH :Chrome |
| | | | UN :Natural Steel | UN :Natural Steel |
| | | | PB :Polished Brass | PB :Polished Brass |

Examples:

TM-625R-HC-WH = White Trim Ring w/ Slope Clear Reflector

TM-655R-HC-WH = White Trim Ring w/ Straight Haze Clear Reflector